



Plug & Play cable crossover for damping the center speaker

Model/YOM: Sprinter VS30 from 2018 (Type W907 / W910)



Packing list:

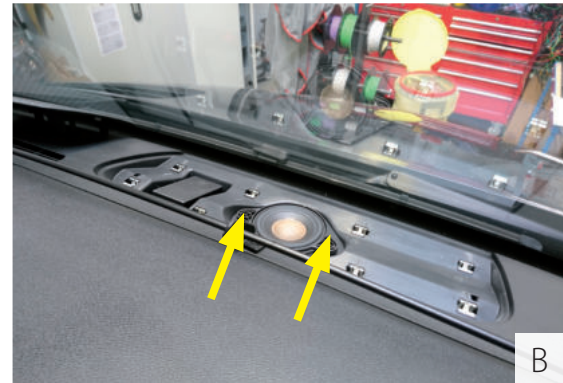
1x cable crossover for center speaker jacketed



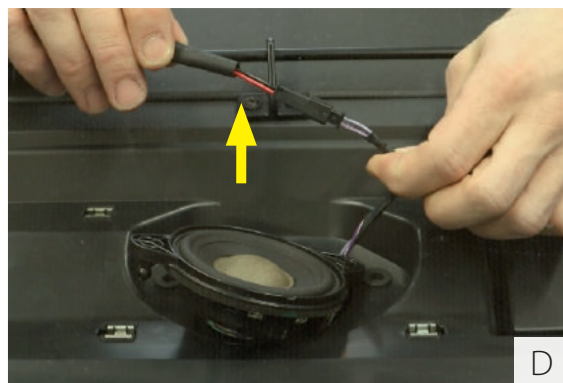
Installation video on
watch youtube:



Attenuation of the center speaker in the dashboard



- Dismantle original cover (see fig. A)
- Lever out loudspeaker (see fig. B)



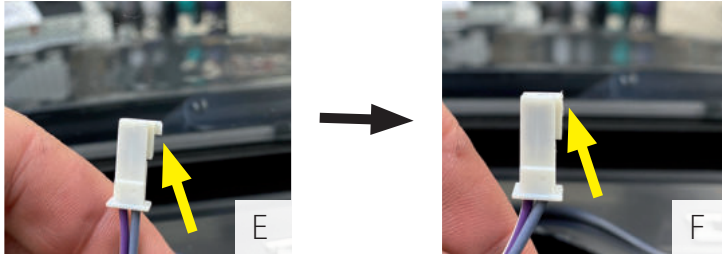
- Disconnect the purple-white marked cable, insert the cable switch (fig. C) and reconnect the loudspeaker (see fig. D).
- finally reinsert loudspeaker and clip in cover

Notice:

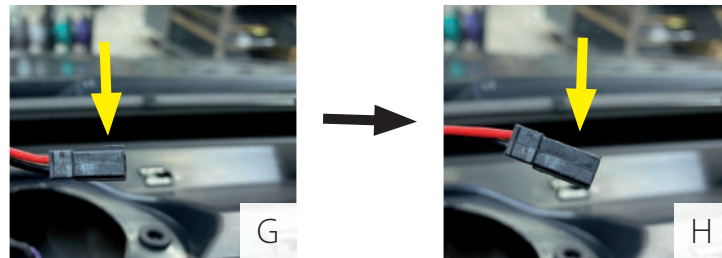
This is not an improvement of the factory speakers, but the possibility of harmonious integration of the center speaker, so that the factory tweeters and woofers are perceived in the vehicle.

To achieve a sound performance we recommend the 3-way front system or sound package I, which significantly increases the sound performance of the system due to the additional amplifier and subwoofer. All sound systems include the crossover for throttling.

Attention: On some vehicles the original Mercedes connectors have been swapped. In this case, the connector must be modified as follows:



- If the factory speaker connector has a pin on the end of the plug (see fig. E), carefully separate it with a knife (see fig. F).



- Repeat this for the connector of the Jehnert Center crossover (fig. G/H) so that the connection fits between the crossover and the factory connection cable.

Note: keep the radio playing while unplugging the center speaker. No sound should be played, otherwise the emergency system has been interrupted.