



Most universal Clamp-Ring Windows will require the creation of a template. You can use aluminum framing on the Window's backside or the inner frame of the clamp ring. We will have illustrations of using the clamp ring.

TOOLS

Cutting Device
Body Saw, Air Saw, Reciprocating Saw, etc.
Drill Bit
Phillips Head Screwdriver
Screw Gun
Metal File

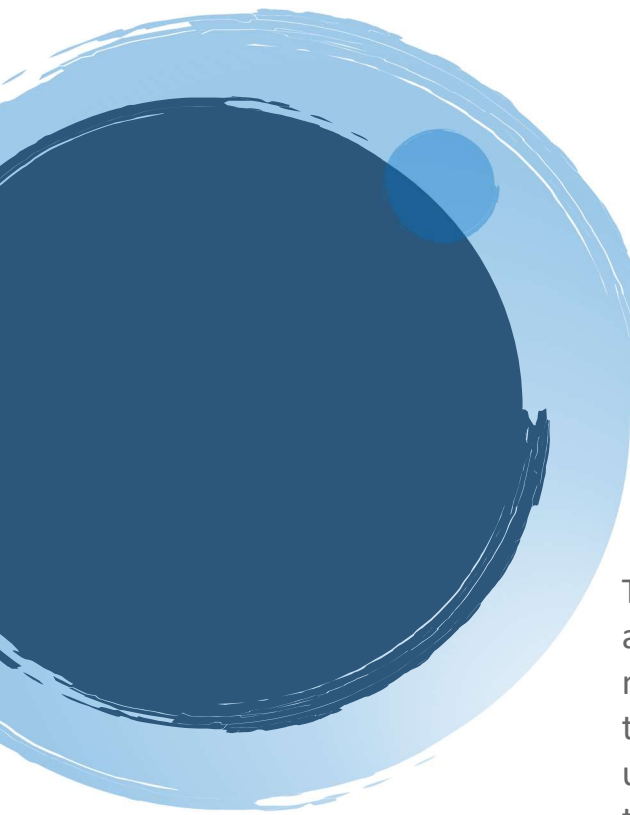
MATERIALS

Paint Primer
Glass Cleaner
Paper Towels
Marker
Cardboard
Wood Spacer



Trace your template onto the cardboard box sharpie, black marker, etc... After drawing out the pattern, it is time to cut it away from the cardboard. Cut too the inside of the drawn line.

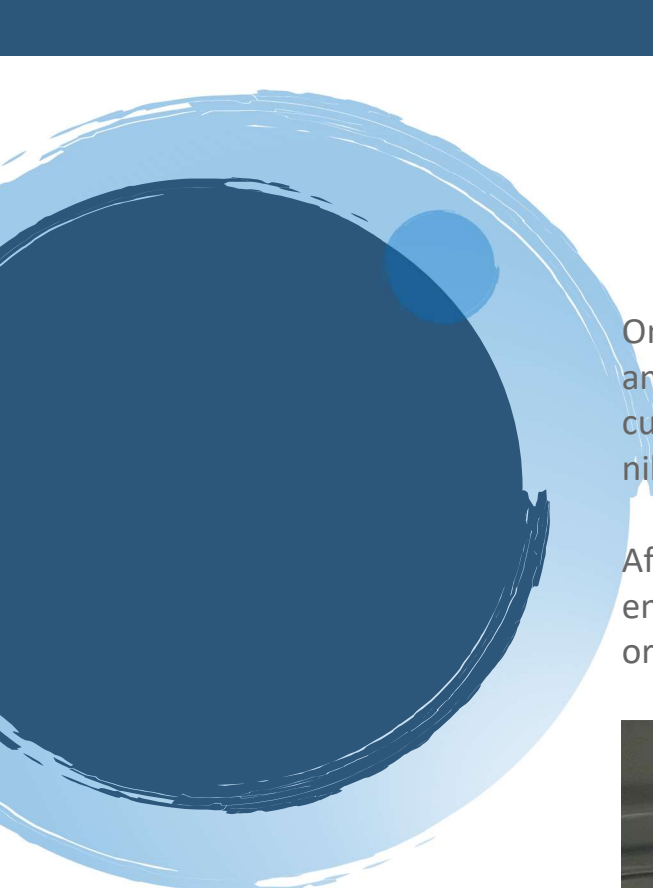




Take your template and clean up any rough edges; we are ready to place it on your Van. You will want to measure out for placement to ensure you have your template where you want it to be. You can also line up the template on the interior of your van wall, put two screws through the cardboard into your wall, then remove the screws. You will now have the exact spot to line up to on the outside. Next, line up the holes

from Van's exterior and put the two screws back in place to hold the template to the van wall on the outside. You can now make minor adjustments and measure body lines to ensure straightness. Then mark your cut line using your template on the wall.



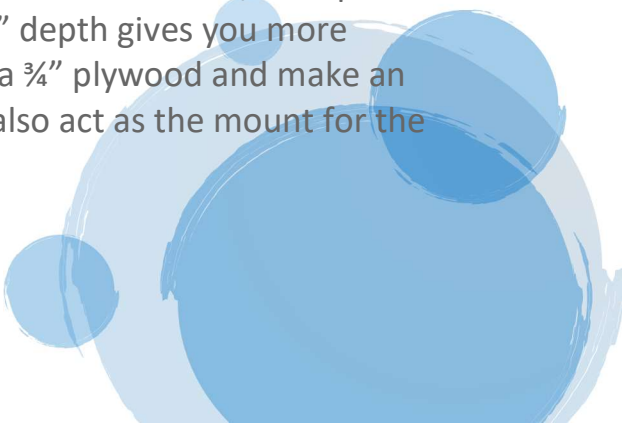


Once you have drawn your pattern onto the van wall and are happy with the placement, you are ready to cut. Reciprocating saw, Jig Saw, skill saw, disc, nibbler, shears, etc...

After cutting your hole, dry-fit the bunk window to ensure the Window fits into the hole. No adjustments or extra trimming is needed.



These windows will require a spacer wood is the most popular option. There is either a $\frac{3}{4}$ " depth which a $\frac{3}{4}$ " dowel or $\frac{3}{4}$ " plywood can be used or a 1-1/8" depth that a 1x2 can be used. $\frac{3}{4}$ " depth gives you more versatility as you can use a $\frac{3}{4}$ " plywood and make an over side frame that can also act as the mount for the screen and shade combo.





Put the Window in place from outside the Van, allowing the aluminum mounting frame to extend through a hole in the wall and through your spacer. Note if you are using a $\frac{3}{4}$ " dowel or 1x2 you can start to attach the trim ring then slip behind the ring before tightening. Next, place the clamp ring from the inside.

With one person holding the Window in place on the outside, the other can start to screw from the inside. Add each screw in place few threads each to start. Then come back around and a few threads at a time switching screws keep going around and around till the frame is completely snug to the window frame. The reason for attaching in the manner will ensure that the window the wall and the clamp ring are all finessed together nothing is forced and will help to ensure the van wall is not buckled and the seal is evenly pressed into the van wall.

With the Screen and frame combo depending on your design if the screen and frame combo will be inset into a window pocket the previously mention $\frac{3}{4}$ " plywood is an easy way to create spacer and ,mount for your screen frame than build your interior wall pocket around the outer frame of your screen/shade frame work.

You can also simply attach to the interior side of your interior wall.

